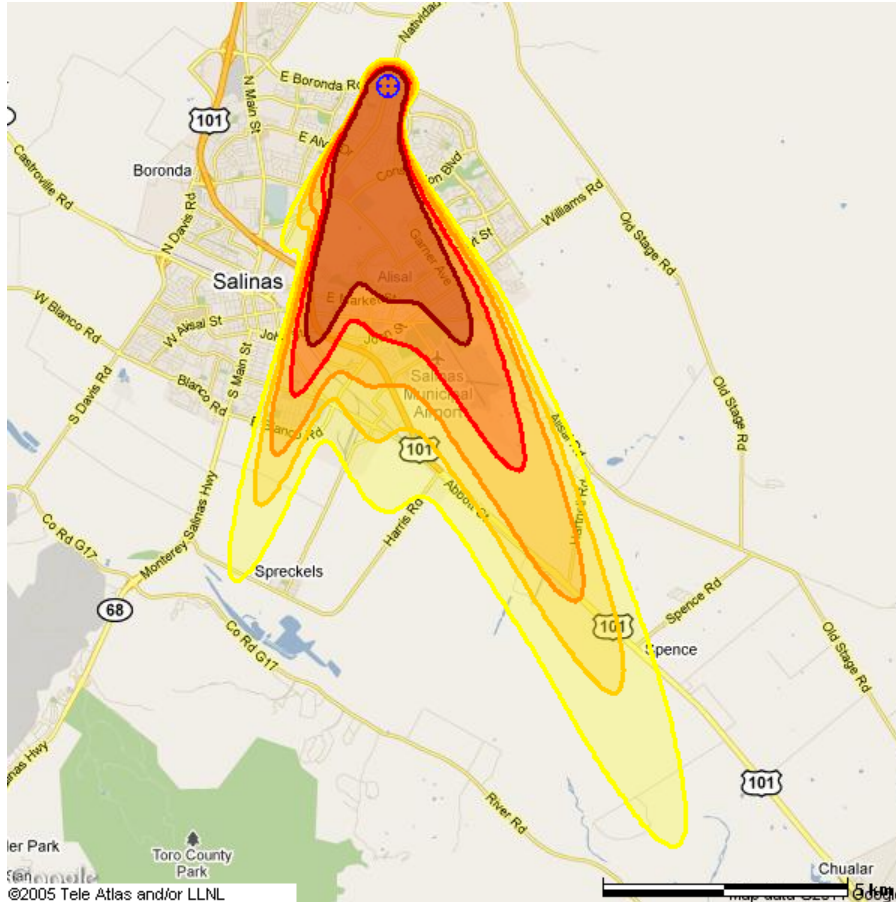


Early Fallout Casualties
 (1-Day Groundshine Dose)



Acute (Short-Term) Effects		
Description	(rad) Extent Area	Population Fatalities Casualties
Fatalities in over 90% of Population.	>450 5.5km 9.2 km2	36,500 35,600 36,500
Fatalities in over 50% of Population.	>300 8.3km 15.8 km2	50,200 45,800 50,200
Fatalities in over 10% of Population.	>200 11.2km 25.5 km2	60,700 49,000 60,200
Non-Fatal Injuries/Effects in over 50% of Surviving Population.	>150 13.2km 34.6 km2	64,000 49,100 62,400
Non-Fatal Injuries/Effects in over 10% of Surviving Population.	>100 16.5km 51.7 km2	67,500 49,100 63,300

Areas and counts in the table are cumulative. Casualties include both Fatal and Non-Fatal effects. Population Source = LandScan USA V1.0.