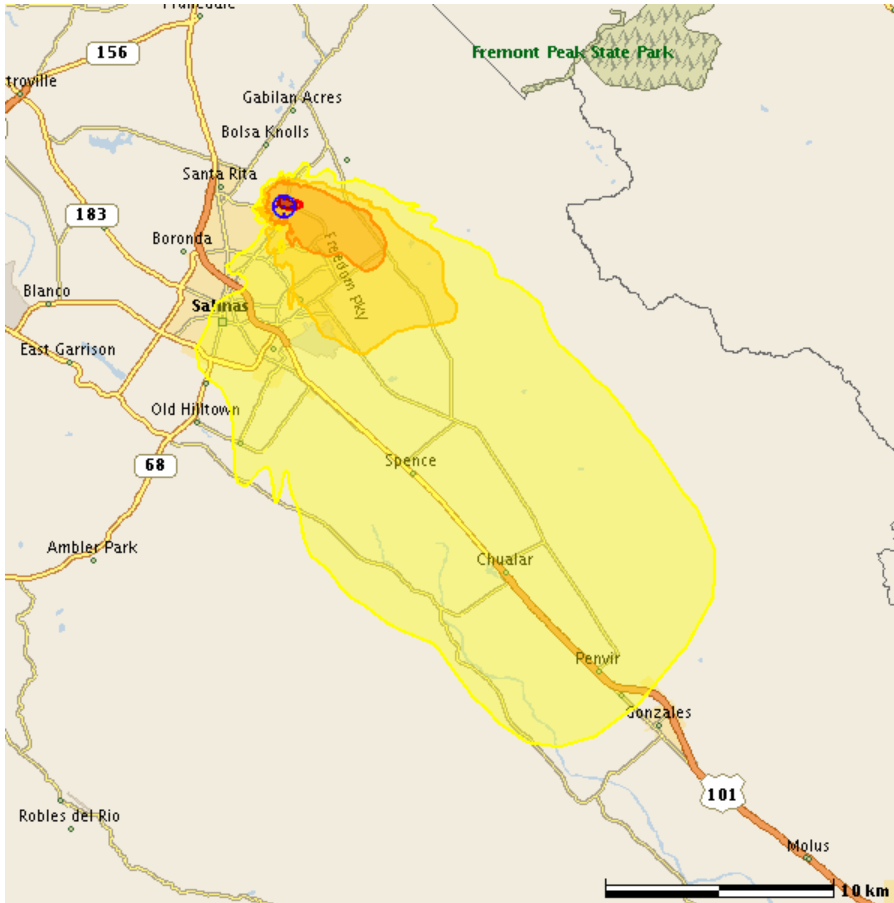


Public Health Protective Action Criteria at 06/30/2011 20:00:00 UTC
 (Areas exceeding harmful vapor air concentration limits)



Map Size: 39.6 km by 39.6 km Id: Beta.rcE16946.rcC1

Acute (Short-Term) Effects		
Description	(ppm) Extent Area	Population
>85% of the exposed population could receive a lethal dose.	>0.9 0.6km 0.3 km2	80
>50% of the exposed population could receive a lethal dose.	>0.6 0.8km 0.4 km2	100
>60 min AEGL-3: Death or irreversible health effects possible.	>0.02 4.9km 11.3 km2	6,460
>60 min AEGL-2: Serious health effects or impaired ability to take protective action.	>0.006 9.0km 40.3 km2	30,900
>60 min AEGL-1: Minor reversible health effects. Possible odor.	>0.0005 27.0km 332 km2	104,000
Areas and counts in the table are cumulative. Population Source = LandScan USA V1.0.		

Effects or contamination from June 30, 2011 16:00 UTC to June 30, 2011 20:00 UTC
 Release Location: 36.715775 N, 121.623420 W
 Material: SARIN
 Generated On: July 23, 2012 16:36 UTC
 Model: ADAPT/LODI
 Comments: Hypothetical release