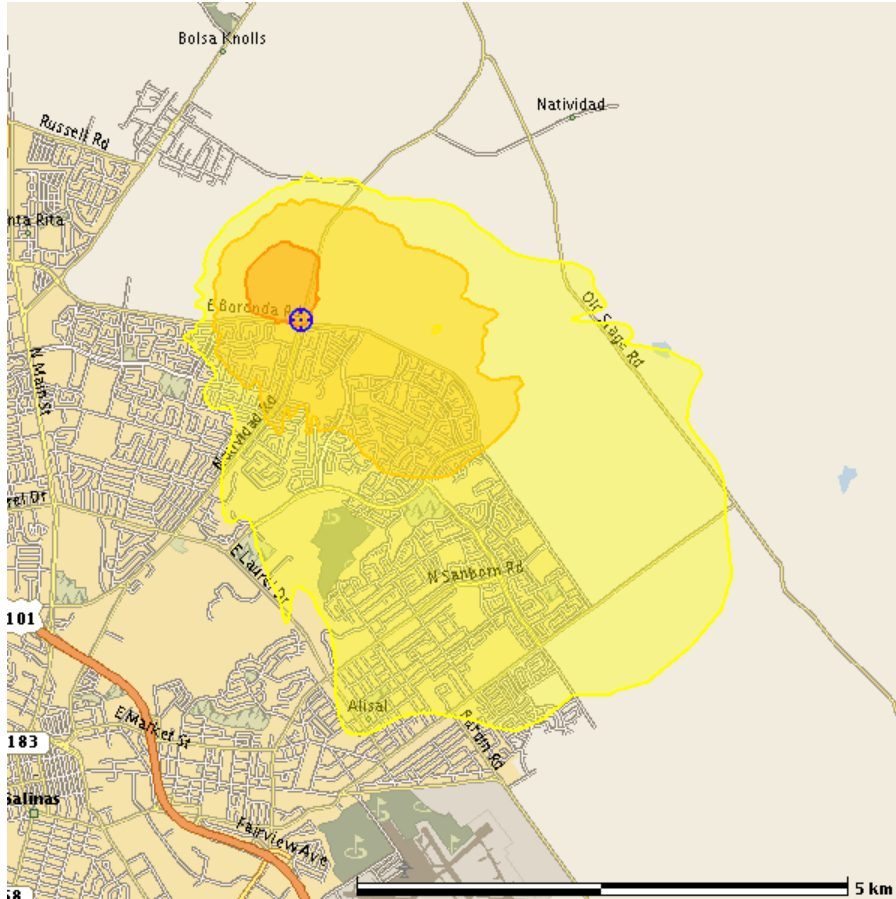


Public Health Protective Action Criteria at 06/30/2011 13:00:00 PDT
 (Areas exceeding harmful vapor air concentration limits)



Map Size: 9.2 km by 9.2 km Id: Beta.rcE16945.rcC1

Acute (Short-Term) Effects			
	Description	(ppm) Extent Area	Population
	>60 min AEGL-3: Death or irreversible health effects possible.	>20 0.8km 0.5 km ²	20
	>60 min AEGL-2: Serious health effects or impaired ability to take protective action.	>2 2.4km 5.8 km ²	6,290
	>60 min AEGL-1: Minor reversible health effects. Possible odor.	>0.5 5.2km 21.7 km ²	27,600
Areas and counts in the table are cumulative. Population Source = LandScan USA V1.0.			

Effects or contamination from June 30, 2011 16:00 UTC to June 30, 2011 20:00 UTC
 Release Location: 36.715775 N, 121.623420 W
 Material: CHLORINE
 Generated On: July 23, 2012 15:37 UTC
 Model: ADAPT/LODI
 Comments: Hypothetical release